



# South Mountain Ranch

Registered Hereford & Angus Cattle

4<sup>th</sup> Annual Bull Sale

Thursday, February 9, 2012

## SELLING 20 HEREFORD BULLS & 65 ANGUS BULLS

### Sale Information

Matt Duckett

Home: (208) 459-3070

Cell: (208) 230-5650

Email: [southmountainranch@gmail.com](mailto:southmountainranch@gmail.com)

Website: [www.herefordangus.com](http://www.herefordangus.com)

### Sale Location

13584 State Hwy 78

Melba, Idaho

Mile Marker 16

### Sale Day Contacts

Matt Duckett (208) 230-5650

Adam Duckett (208) 409-8524

Andy Duckett (208) 221-6402

Katie Colyer (208) 599-2962

### Participating on the Internet

- Video of each lot available on [liveauctions.tv](http://liveauctions.tv) first week of February
- Register in advance for buyer number
- Place proxy bid or bid real time online
- If you need assistance registering or bidding, please contact Katie Colyer at (208) 599-2962

### Schedule of events leading up to sale

- Two year old bulls available immediately, on a first come basis
- Fall and yearling bulls will be on display beginning February 1<sup>st</sup>  
Videos of each bull available online the first week of February
- Online bidding opens February 7<sup>th</sup> on [liveauctions.tv](http://liveauctions.tv)

### Schedule of events on sale day

- Bulls on display beginning at 9 a.m.
- Sale lunch at 11:30 a.m.
- Silent/Internet Auction starts at 12:30 p.m. – closing out of lots.



# TWO YEAR OLD ANGUS

## 1 S M R UPWARD 0042 [AMF]

Birthdate: 01/19/2010 Tattoo: 0042 Bull 16601383  
 Connealy Onward Connealy Lead On  
**Sitz Upward 307J** Altune of Conanga 6104  
 Sitz Henrietta Pride 81M Sitz Value 7097  
 Sitz Henrietta Pride 1370  
 Shaw Traveler 4603 California Traveler  
**S M R Miss Traveler 716** Shaw Lady Alliance 2034M  
 Shaw Lady Traveler 4050P W 8180 Traveler 0354  
 W Lady Traveler 9346

BW	CED	BEPD	WW	YW	MILK
83	6	1.7	55	104	35
SC	MARB	REA	\$EN	\$W	\$B
.98	.52	.20	-23.62	29.81	68.86

Top 15% WW, 10% YW, 1% Milk, 15% \$B. Individual WR of 112. Dam's WR Avg. of 105 on 3 calves.

## 2 S M R THUNDER 0046 [CAC]

Birthdate: 01/21/2010 Tattoo: 0046 Bull 16601384  
 Baldrige Kaboom K243 KCF Jauer 353 Traveler 589 27  
**Connealy Thunder** Pleasanta of Conanga 736  
 Parka of Conanga 241 Bon View Bando 598  
 Partina of Conanga 6237  
 S A F 598 Bando 5175 Bon View Bando 598  
**Bear Mtn Bell 3129** S A F Royal Lass 1002  
 Foote Acres Bell 108K G A R Commitment  
 Foote Acres Bell 10F

BW	CED	BEPD	WW	YW	MILK
86	5	1.4	43	89	28
SC	MARB	REA	\$EN	\$W	\$B
.38	.16	.60	-9.53	25.11	50.46

This bull is deep, wide, and stout. His Dam is an exceptional cow, with a daughter in the herd and a daughter in the Riverbend Angus herd. Dam's WR Avg. of 104 on 6 calves.

## 3 S M R PREDESTINED 0052

Birthdate: 02/2/2010 Tattoo: 0052 Bull 16602144  
 B/R New Design 036 V D A R New Trend 315  
**G A R Predestined** B/R Blackcap Empress 76  
 G A R Ext 4206 N Bar Emulation EXT  
 G A R 6807 Traveler 1432  
 Twin Valley Precision E161 G A R Precision 1680  
**Thomas Lucy 31105** W C C Blackcap  
 Thomas Lucy 0698 V D A R Lucys Boy  
 Thomas Lucy 1041

BW	CED	BEPD	WW	YW	MILK
89	5	3.3	48	91	24
SC	MARB	REA	\$EN	\$W	\$B
.3	.78	.40	-5.41	23.76	69.14

An exceptional long, deep, stout Predestined son. This bull comes from a great Thomas cow. His maternal younger brother is up at the Washington Cattleman's bull test. Two of Dam's daughters in the herd. Dam's WR Avg. is 102 on 6 calves.



G A R Predestined – sire of lots 3, 5, 6, 20, 24, 25, 41, 47, 58

## 4 S M R FORESIGHT 0054

Birthdate: 02/4/2010 Tattoo: 0054 Bull 16602093  
 Papa Forte 1921 Papa Optima 9818  
**Woodhill Foresight** Bon View Bando 598  
 Bon View Gammer 233  
 Bon View Gammer 85 G A R 6807 Traveler 1432  
 Wulffs Ext 6106 N Bar Emulation EXT  
**Thomas Adventure Girl 5707** Wulffs Erica Dianna C116  
 Thomas Adventure Girl 6140 Paramount Ambush 2172  
 Thomas Adventure Girl3410

BW	CED	BEPD	WW	YW	MILK
98	-2	4.2	49	86	20
SC	MARB	REA	\$EN	\$W	\$B
.25	.47	.30	4.72	24.36	68.24

This is a great maternal mating – with Foresight x Wulffs EXT. A lot of growth, maternal, and carcass potential with this bull.

## 5 S M R PREDESTINED 0067

Birthdate: 02/12/2010 Tattoo: 0067 Bull 16610110  
 B/R New Design 036 V D A R New Trend 315  
**G A R Predestined** B/R Blackcap Empress 76  
 G A R Ext 4206 N Bar Emulation EXT  
 G A R 6807 Traveler 1432  
 Sitz Tradition RLS 8702 Vermilion Dateline 7078  
**Thomas Lucy 6296** R L S Elsa Evergreen 5018  
 Thomas Lucy 3799 Sitz Traveler 8180  
 Thomas Lucy 3109

BW	CED	BEPD	WW	YW	MILK
77	8	1.3	50	96	22
SC	MARB	REA	\$EN	\$W	\$B
.73	.85	.31	-3.72	28.93	68.24

An outstanding Predestined son who has it all. With a low birth weight and a lot of growth, this bull is going to sire some great calves. Phenotypically, this bull has a lot of eye appeal.

## 6 S M R PREDESTINED 0092

Birthdate: 03/03/2010 Tattoo: 0092 Bull 16602145  
 B/R New Design 036 V D A R New Trend 315  
**G A R Predestined** B/R Blackcap Empress 76  
 G A R Ext 4206 N Bar Emulation EXT  
 G A R 6807 Traveler 1432  
 Bon View New Design 878 B/R New Design 036  
**Thomas Elsa 5372** Bon View Gammer 85  
 Thomas Elsa 1645 G A R Precision 1680  
 Thomas Elsa 3272

BW	CED	BEPD	WW	YW	MILK
81	8	1.9	50	86	26
SC	MARB	REA	\$EN	\$W	\$B
-.02	.95	.27	-4.61	32.32	73.70

Another really good Predestined son. This bull comes from one of our favorite Thomas cows – she has a WR Avg. of 104 on 5 calves. This bull had a WR of 114. He is in the top 10% for \$W and the top 5% for \$B.



Connealy Thunder daughter – South Mtn replacement heifer

# 7 S M R Rito 0103

Birthdate: 03/18/2010 Tattoo: 0103 Bull 16592385  
 Sinclair Rito Legacy 3R9 R R Rito 707  
**Riverbend 3R9 Rito 1401U** Ideal 4465 of 6807 4286  
 G Bar Diana 1525 S A F 598 Bando 5175  
 Wulffs Erica Dianna C116  
 Wulffs Ext 6106 N Bar Emulation EXT  
**Thomas Lucy 5054** Wulffs Erica Dianna C116  
 Thomas Lucy 3096 Twin Valley Precision E161  
 Thomas Lucy 0864

BW	CED	BEPD	WW	YW	MILK
83	7	0.8	37	75	17
SC	MARB	REA	\$EN	\$W	\$B
.14	.39	.34	7.94	22.78	53.65

This bull is bred maternal from top to bottom. He will sire easy fleshing cattle that will thrive in rough country. Top 15% for \$EN, 25% for BW. Dam has two replacements in the herd.

# 8 S M R Rito 0115

Birthdate: 03/31/2010 Tattoo: 0115 Bull 16592379  
 Sinclair Rito Legacy 3R9 R R Rito 707  
**Riverbend 3R9 Rito 1401U** Ideal 4465 of 6807 4286  
 G Bar Diana 1525 S A F 598 Bando 5175  
 Wulffs Erica Dianna C116  
 G A R Grid Maker G D A R Traveler 044  
**Thomas Rose Blackburr 51098** G A R Precision 2536  
 Thomas Rose Blackburr 4020 R R Traveler 5204  
 ThomasRose Blackburr 2397

BW	CED	BEPD	WW	YW	MILK
89	2	3.2	43	80	18
SC	MARB	REA	\$EN	\$W	\$B
	.46	.39	4.79	21.49	53.79

This bull combines the Rito maternal with the Grid Maker growth. Top 25% for \$EN. Dam has avg. WR of 103 on 4 calves, one daughter in the herd, and one son to Century Cattle.

## TWO YEAR OLD HEREFORDS

# 9 S M R Nitro 0050

Birthdate: 01/28/2010 Tattoo: 0050 Bull 43075167 - Horned  
 GH Neon 17N GH Difference Britisher 45L  
**UPS TCC Nitro 1ET** GH Sir Simba Lass 107K  
 LCC Two Timin 438 ET Remittal Online 122L  
 RST ROF Reba 28H  
 H5 500 Advance 897 CL 1 Domino 500E  
**/S Lady Advance 7124T** H5 Ms 9012 Advan 472  
 /S Lady Curve Bender 4017P /S Moms Curve Bender 0838  
 /S Lady Hilite 753G

BW	CED	BEPD	WW	YW	MILK
102	-.8	5.9	56	96	21
SC	MARB	REA	\$BMI	\$CEZ	\$CHB
.9	-.07	.67	17	14	25

Top 10% WW, 4% YW, 25% SC, 2% REA, 25% BMI, 20% CHB. Individual WR of 107. Dam has WR Avg. of 102 on 3 calves, and one son to Dunham Ranch. Full brother to lot 79.

# 11 S M R Moler 0068

Birthdate: 02/14/2010 Tattoo: 0068 Bull 43085898 - Polled  
 BR Moler ET Remittal Online 122L  
**C Moler 6225 ET** DM L1 Dominette 820  
 C Notice Me Now ET C -S Pure Gold 98170  
 HH Miss Advance 104A  
 HH Advance 373C CL 1 Domino 185  
**/S Lady Domino 408P** HH Miss Advance 160A  
 /S Lady Domino 244M CL 1 Domino 166  
 /S Lady Performer 820H

BW	CED	BEPD	WW	YW	MILK
88	3.2	2.0	36	51	24
SC	MARB	REA	\$BMI	\$CEZ	\$CHB
.9	.07	.16	20	19	18

A nice dark red fully pigmented bull out of our Moler bull. Top 10% CED, 20% BW, 15% BMI, 5% CEZ. Dam has a BR Avg. of 94 and a WR Avg. of 102 on 4 calves, two daughters in the herd and a son to Randy Roberts. Maternal brother to lot 80.

# 10 S M R ADVANCE 0063

Birthdate: 02/10/2010 Tattoo: 0063 Bull 43085886 - Horned  
 CL 1 Domino 206M CL 1 Domino 9126J  
**HH Advance 5212R** CL 1 Dominette 825H  
 HH Miss Advance 1028 HH Advance 6052F  
 HH Miss Advance 731G  
 /S 484 Domino 5518 CL 1 Domino 484  
**S M R Miss Domino 719** /S Lady Domino 329N  
 /S Lady Curve Bender 5038R /S Mister Mom 7745  
 TS Lady Peerless 0403

BW	CED	BEPD	WW	YW	MILK
82	1.9	2.0	40	67	30
SC	MARB	REA	\$BMI	\$CEZ	\$CHB
.9	.04	.18	17	17	19

Out of the good Holden 5212R bull. A lot of maternal in this pedigree. A really nice looking bull. This bull should work on heifers. Top 20% BW, 25% CED, 5% CEZ. Individual ratio of 121 on marbling.



Chopper x C Cowgirl 7056 heifer

# 12 S M R RANCHER 0086

Birthdate: 02/28/2010 Tattoo: 0086 Bull 43085892 - Horned  
 MH Dakota 0230 SR Lad 447  
**Churchill Rancher 592R** JV Angel 684  
 Churchill Lady 202 HH Advance 767G 1ET  
 Churchill Lady 0113  
 /S Mister Mom 7745 Mister Mom 221  
**/S Lady Mom 5044R** /S Ms Peer Plan 526E  
 /S Lady Domino 212M CL 1 Domino 166  
 /S Patti Peerless 74G

BW	CED	BEPD	WW	YW	MILK
88	1.0	2.9	47	77	21
SC	MARB	REA	\$BMI	\$CEZ	\$CHB
1.0	.15	.27	19	16	22

This bull has a very nice confirmation. We have been impressed with these Rancher sons. Top 15% SC, 15% Marb, 20% BMI. ¼ brother to lot 14.



C Moler 6225 ET - Sire of lots 11, 13, 85, 86, 87

# 13 S M R MOLER 0091

Birthdate: 03/02/2010 Tattoo: 0091 Bull 43085895 - Polled  
 BR Moler ET Remitall Online 122L  
**C Moler 6225 ET** DM L1 Dominette 820  
 C Notice Me Now ET C-S Pure Gold 98170  
 HH Miss Advance 104A  
 H5 9012Y Advance 501 HH Advance 9012Y  
**/S Lady Advance 4125P** H5 MS 590 Domet 306  
 /S Lady Peerless1246L TS Peerless Builder 8453  
 MS Masterpln 3108 C3

BW	CED	BEPD	WW	YW	MILK
89	2.5	3.0	42	67	19
SC	MARB	REA	\$BMI	\$CEZ	\$CHB
0.6	.03	.39	18	17	21

Red necked, goggle eyed, polled Moler son. Top 25% CED, 20% \$CEZ, individual REA ratio of 109.



S M R Moler 0091 - Lot 13

# 14 S M R RANCHER 0095

Birthdate: 03/08/2010 Tattoo: 0095 Bull 43085891 - Horned  
 MH Dakota 0230 SR Lad 447  
**Churchill Rancher 592R** JV Angel 684  
 Churchill Lady 202 HH Advance 767G 1ET  
 Churchill Lady 0113  
 /S Mister Mom 7745 Mister Mom 221  
**/S Lady Curvebender 5038R** /S Ms Peer Plan 526E  
 TS Lady Peerless 0403 TS Peerless Mark 6648  
 TS Miss Mark 2463

BW	CED	BEPD	WW	YW	MILK
94	0.3	3.6	48	79	25
SC	MARB	REA	\$BMI	\$CEZ	\$CHB
0.9	.23	.23	18	15	24

Another nice Rancher son out of a super good Mister Mom daughter. Dam has an exceptional udder and she boasts a WR Avg. of 111 on 3 calves, with one daughter in the herd, and a son to Bill Jungert. 3/4 brother to lot 12. Top 5% marbling epd with individual ratio of 113.

# 15 S M R NITRO 0153 ET

Birthdate: 03/04/2010 Tattoo: 0153 Bull 43137334 - Polled  
 GH Neon 17N GH DifferenceBritisher 45L  
**UPS TCC Nitro 1ET** GH Sir Simba Lass 107K  
 LCC Two Timin 438 ET Remitall Online 122L  
 RST ROF Reba 28H  
 FCC 36N Absolute 7R HF 4L Beyond 36N  
**C Ms Absolute 7013 ET** FCC 035J Mindy 11M  
 CL 1 Dominette 8104H 1ET L1 Domino 95461  
 CL1 Dominette 178

BW	CED	BEPD	WW	YW	MILK
ET	-2.1	4.8	53	88	13
SC	MARB	REA	\$BMI	\$CEZ	\$CHB
0.9	.09	.43	20	13	25

Herd bull prospect. This bull is dark red to the ground, fully pigmented, polled, and well built. He has a lot of muscle, bone, depth, and is very correct on his feet and legs. His dam is out of the great Cooper cow who sold for \$25,000 (Colyer donor) 8104H. Flush mate to lots 16 & 17.

# 16 S M R NITRO 0154 ET

Birthdate: 03/05/2010 Tattoo: 0154 Bull 43136988 - Horned  
 GH Neon 17N GH DifferenceBritisher 45L  
**UPS TCC Nitro 1ET** GH Sir Simba Lass 107K  
 LCC Two Timin 438 ET Remitall Online 122L  
 RST ROF Reba 28H  
 FCC 36N Absolute 7R HF 4L Beyond 36N  
**C Ms Absolute 7013 ET** FCC 035J Mindy 11M  
 CL 1 Dominette 8104H 1ET L1 Domino 95461  
 CL1 Dominette 178

BW	CED	BEPD	WW	YW	MILK
ET	-2.1	4.8	53	88	13
SC	MARB	REA	\$BMI	\$CEZ	\$CHB
0.9	.09	.43	20	13	25

Full brother to lots 15 & 17. Dark red bull with a lot of power. An opportunity to own some of the breed's best genetics when you consider Nitro and 7013's pedigree's and performance. Top 15% WW, 15% YW, 15% REA, 3% \$BMI, and 20% \$CHB.

# 17 S M R NITRO 0157 ET

Birthdate: 03/11/2010 Tattoo: 0157 Bull 43136986 - Horned  
 GH Neon 17N GH DifferenceBritisher 45L  
**UPS TCC Nitro 1ET** GH Sir Simba Lass 107K  
 LCC Two Timin 438 ET Remitall Online 122L  
 RST ROF Reba 28H  
 FCC 36N Absolute 7R HF 4L Beyond 36N  
**C Ms Absolute 7013 ET** FCC 035J Mindy 11M  
 CL 1 Dominette 8104H 1ET L1 Domino 95461  
 CL1 Dominette 178

BW	CED	BEPD	WW	YW	MILK
ET	-2.1	4.8	53	88	13
SC	MARB	REA	\$BMI	\$CEZ	\$CHB
0.9	.09	.43	20	13	25

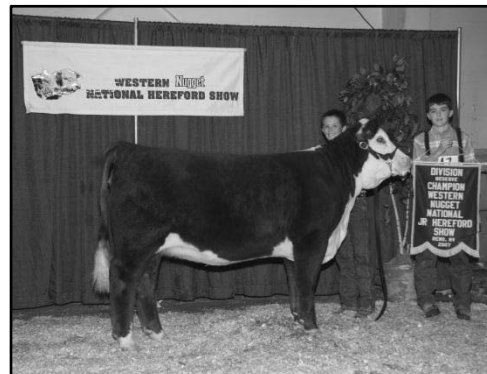
A definite herd bull candidate. This bull is long, deep, big topped, incredible bone, and a lot of red meat - especially through the hind end. Fully pigmented and very correct on his feet and legs this bull has it all. Full brother to lots 15 and 16.

# 18 S M R EASY DEAL 9138

Birthdate: 11/29/2009 Tattoo: 9138 Bull 43055848 - Horned  
 BR MD Channing ET Remitall Online 122L  
**H Easy Deal 609 ET** DM L1 Dominette 820  
 C Ms Pure Pure Gold 2003 C-S Pure Gold 98170  
 C 8403 Ms Achv 96047  
 Star Bright Future 533P ET Remitall Online 122L  
**Oaks RKR Emerald 7117 ET** RB L1 Dominette 816  
 Red Hills Crystal G240 L80 Star Red Hills 073 G240  
 JTJ Beau Miss 38A

BW	CED	BEPD	WW	YW	MILK
92	-3.3	4.6	48	85	21
SC	MARB	REA	\$BMI	\$CEZ	\$CHB
0.5	.01	.46	12	10	22

Sired by the Reno and Fort Worth Champion Easy Deal and "Emerald" a Fort Worth Reserve Champion and donor cow of ours. This bull is moderate framed with a lot of muscle. This bull represents an opportunity to purchase top of the breed genetics.



C Ms Absolute 7013 ET - Dam of lots 15, 16, 17

# FALL YEARLING ANGUS

## 19 S M R FINAL ANSWER 0122

Birthdate: 07/22/2010 Tattoo: 0122 Bull 16722424  
 Sitz Traveler 8180 G D A R Traveler 71  
**S A V Final Answer 0035** Sitz Everelda Entense 1137  
 S A V Emulous 8145 Bon View Bando 598  
 S A V Sky Emulous 2124  
 Rito 112 of 2536 Rito 616  
**Thomas Miss Liberty 6510** Rito 616 of 4B20 6807  
 Thomas Miss Liberty 4269 G A R Precision 2536  
 G A R Grid Maker  
 Thomas Miss Liberty 1707

BW	CED	BEPD	WW	YW	MILK
72	10	-0.1	62	100	23
SC	MARB	REA	\$EN	\$W	\$B
.54	.53	.35	-6.74	38.94	58.72

This is a bull I have been excited about since he was born. His dam is one of the best cows we bought from Thomas Angus. She has a WR Avg. of 108 on 4 calves. Final Answer is very popular right now and for good reason. He represents the balance and real world performance cattlemen are seeking. This bull offers it all. Study his pedigree and numbers – he is at the top of the breed across the board. Top 10% CED, 10% BW, 3% WW, 15% YW, 1% \$W. Individual WR of 113. A tremendous opportunity in this bull.

## 20 S M R PREDESTINED 0123

Birthdate: 07/28/2010 Tattoo: 0123 Bull 16723331  
 B/R New Design 036 V D A R New Trend 315  
**G A R Predestined** B/R Blackcap Empress 76  
 G A R Ext 4206 N Bar Emulation EXT  
 BC 7022 Raven 7965 G A R 6807 Traveler 1432  
**Exar Blackbird 7897** B C Marathon 7022  
 EXAR Blackbird 3671 O C C Blackbird 796F  
 PF Every Time 1111  
 Exar Blackbird 1707

BW	CED	BEPD	WW	YW	MILK
80	4	3.7	44	88	21
SC	MARB	REA	\$EN	\$W	\$B
			-1.83	18.75	

These Predestined sons are tough to beat for overall growth and performance. We have been very happy with our Predestined daughters, they are proving to be great cows. Kyle Colyer picked the dam of this bull for us out of the Express Ranch female sale.

## 21 S M R FINAL ANSWER 0124

Birthdate: 07/28/2010 Tattoo: 0124 Bull 16723293  
 Sitz Traveler 8180 G D A R Traveler 71  
**S A V Final Answer 0035** Sitz Everelda Entense 1137  
 S A V Emulous 8145 Bon View Bando 598  
 S A V Sky Emulous 2124  
 WK Midland 5065 BR Midland  
**Bear Mtn Eileenmere 7406** WK Bonny 1108  
 Bear Mtn Eileenmere 5203 Rito 112 of 2536 Rito 616  
 Bear Mtn Eileenmere 320L

BW	CED	BEPD	WW	YW	MILK
64	12	-0.6	51	91	20
SC	MARB	REA	\$EN	\$W	\$B
			-1.86	30.89	

A true heifer bull candidate. A really well put together Final Answer son. His dam has a BR Avg. of 93 and WR Avg. of 103 on 3 calves, with a son to Hammond Ranch and a daughter in the herd.



S A V Final Answer 0035 – Sire of lots 19, 21, 35, 43, 56, 61, 63

## 22 S M R UPWARD 0126

Birthdate: 08/02/2010 Tattoo: 0126 Bull 16723180  
 Connealy Onward Connealy Lead On  
**Sitz Upward 307J** Altune of Conanga 6104  
 Sitz Henrietta Pride 81M Sitz Value 7097  
 Sitz Henrietta Pride 1370  
 Boyd New Day 8005 A A R New Trend  
**Bear Mtn Zara 5216** S V F Forever Lady 57D  
 Berryessa Zara G Bar 6148 0705  
 Berryessa Zara 556

BW	CED	BEPD	WW	YW	MILK
82	6	2.7	51	103	30
SC	MARB	REA	\$EN	\$W	\$B
	.28	.52	-18.45	22.78	66.56

If you want a lot of growth these Upward calves need to be on your list. This Upward x New Day son will also sire some great daughters to go back in the herd. Top 10% YW, 10% Milk, 15% \$B.

## 23 S M R TOTAL 0131

Birthdate: 08/08/2010 Tattoo: 0131 Bull 16867334  
 Sitz Alliance 6595 Sitz Travler 8180  
**K C F Bennett Total** Sitz Barbaramere Jet 2698  
 Ext of Conanga 6790 N Bar Emulation EXT  
 Lady Enchtress of Conanga  
 G A R Retail Product G A R Precision 1680  
**Rivertend Blackcap T198** G A R Ext 4927  
 Rivertend Blackcap R515 Bon View New Design 1407  
 Davis Blackcap 2156

BW	CED	BEPD	WW	YW	MILK
72	10	-0.3	43	78	22
SC	MARB	REA	\$EN	\$W	\$B
	.47	.34	1.95	30.29	57.10

A very maternal mating here with Total x Retail Product. This bull will sire excellent easy doing daughters with perfect udders. This bull will definitely work on heifers. Top 10% CED, 10% BW, 20% \$W. Dam WR Avg. 103/4

## 24 S M R PREDESTINED 0132

Birthdate: 08/10/2010 Tattoo: 0132 Bull 16723334  
 B/R New Design 036 V D A R New Trend 315  
**G A R Predestined** B/R Blackcap Empress 76  
 G A R Ext 4206 N Bar Emulation EXT  
 G A R 6807 Traveler 1432  
 K C F Bennett Total Sitz Alliance 6595  
**Sawtooth Carol 51S** Ext of Conanga 6790  
 Sawtooth Carol 24P Grandview Womack Sec.  
 Sawtooth Carol 78L

BW	CED	BEPD	WW	YW	MILK
76	8	1.6	48	88	25
SC	MARB	REA	\$EN	\$W	\$B
	.81	.27	-6.49	28.05	67.96

A low birth Predestined son. This bull could sure work on the right set of heifers. This bulls pedigree has it all with Predestined and Bennett Total. Top 25% CED, 5% Marbling, 15% \$B.



Sitz Upward 307J – Sire of lots 1, 22, 55, 59, 64

## 25 S M R PREDESTINED 0134

Birthdate: 08/13/2010 Tattoo: 0134 Bull 16867485  
 B/R New Design 036 V D A R New Trend 315  
**G A R Predestined** B/R Blackcap Empress 76  
 G A R Ext 4206 N Bar Emulation EXT  
 S A F Focus of E R G A R 6807 Traveler 1432  
**Sawtooth Miss Playmate 61S** S A F Fame  
 G D A R Forever Lady 246  
 Sawtooth Miss Playmate 44N B/R Millcreek Compass  
 Sawtooth Miss Playmate 65

BW	CED	BEPD	WW	YW	MILK
87	2	3.9	48	88	25
SC	MARB	REA	\$EN	\$W	\$B
	.82	.15	-6.49	22.56	65.86

A true growth bull tracing back to the great "Focus" bull on the Dam's side of the pedigree. Individual WR of 105. Dam has a WR Avg. of 105 and YR Avg. of 107 on 3 calves. Top 5% Marbling, 20% \$B.

## 26 S M R C FORESIGHT 0136 [NHF]

Birthdate: 08/22/2010 Tattoo: 0136 Bull 16787472  
 Woodhill Foresight Papa Forte 1921  
**CCC Foresight 7013** Bon View Gammer 85  
 CCC Miss Design 1007 B/R New Design 036  
 CCC Miss Right 9017  
 Bear Mtn Right Direction C A Future Direction 5321  
**Bear Mtn Eulima 6182** Bear Mtn Lady Eraline 302  
 Bear Mtn Eulima 3143 Bear Mtn Stockman 747  
 Foote Acres Eulima 61G

BW	CED	BEPD	WW	YW	MILK
74	9	0.5	41	80	23
SC	MARB	REA	\$EN	\$W	\$B
.33	.65	.58	-.81	26.31	74.80

A calving ease son out of our Foresight bull. Our Foresight bull has done so many things right for us. We have several daughters in production and they are great. This bull will work on heifers. Top 15% CED, 20% BW, 5% \$B.

## 27 S M R C FORESIGHT 0138

Birthdate: 08/23/2010 Tattoo: 0138 Bull 16722425  
 Woodhill Foresight Papa Forte 1921  
**CCC Foresight 7013** Bon View Gammer 85  
 CCC Miss Design 1007 B/R New Design 036  
 CCC Miss Right 9017  
 Rito SV1 of 2536 1407 Bon View New Design 1407  
**Sawtooth Sonya 78T** G A R Precision 2536  
 Sawtooth Sonya 102N B/R New Frontier 095  
 4 U Miches Oh My TC

BW	CED	BEPD	WW	YW	MILK
72	7	1.2	48	86	24
SC	MARB	REA	\$EN	\$W	\$B
			-4.53	29.25	

This bull is a nice looking bull that will catch your eye. This bull will work on the right heifers. His Dam's background has high BW EPD's. With his individual BW and being a Foresight son he should be fine.

## 28 S M R C FORESIGHT 0139

Birthdate: 08/22/2010 Tattoo: 0139 Bull 16722426  
 Woodhill Foresight Papa Forte 1921  
**CCC Foresight 7013** Bon View Gammer 85  
 CCC Miss Design 1007 B/R New Design 036  
 CCC Miss Right 9017  
 Shaw Traveler 4603 California Traveler  
**S M R Miss Traveler 704** Shaw Lady Alliance 2034M  
 Shaw Lady Right Design 4313 Shaw Right Design 2353  
 W Lady Traveler 9334

BW	CED	BEPD	WW	YW	MILK
74	9	0.1	40	68	24
SC	MARB	REA	\$EN	\$W	\$B
			2.36	30.41	

A definite heifer bull prospect. We bought this bull's maternal granddam from Shaw's and have two of her daughters in herd. Top 15% CED, 15% BW, 25% \$W. ¾ brother to Lot #31.

## 29 S M R C FORESIGHT 0142

Birthdate: 08/28/2010 Tattoo: 0142 Bull 16722429  
 Woodhill Foresight Papa Forte 1921  
**CCC Foresight 7013** Bon View Gammer 85  
 CCC Miss Design 1007 B/R New Design 036  
 CCC Miss Right 9017  
 BR Midland Twin Valley Precision E161  
**Sawtooth Hazel 6186** BR Royal Lass 7036-19  
 Three Tress Hazel 1932 Bon View New Design 1407  
 V D A R Hazel 355

BW	CED	BEPD	WW	YW	MILK
81	7	1.2	44	78	21
SC	MARB	REA	\$EN	\$W	\$B
	.66	.47	2.04	28.22	66.76

These Foresight sons are all moderate framed with a lot of red meat and good dispositions. This bulls dam has a WR Avg. of 105 on 4 calves with one son to the Hammond Ranch.

## 30 S M R C FORESIGHT 0143

Birthdate: 08/30/2010 Tattoo: 0143 Bull 16722430  
 Woodhill Foresight Papa Forte 1921  
**CCC Foresight 7013** Bon View Gammer 85  
 CCC Miss Design 1007 B/R New Design 036  
 CCC Miss Right 9017  
 Hyline Right Time 338 Leachman Right Time  
**Bear Mtn Pride 4043** Hyline Pride 265  
 Foote Acres Pride 88J Gibb Illini  
 Foote Acres Pride 87G

BW	CED	BEPD	WW	YW	MILK
84	5	2.6	42	77	24
SC	MARB	REA	\$EN	\$W	\$B
.84	.56	.40	-1.17	24.48	73.17

This bull's Sire - CCC Foresight 7013 has sired 59 calves on our ranch with an average BW of 71 pounds and we have never pulled one calf. Top 25% Marbling, 5% \$B.

## 31 S M R C FORESIGHT 0145

Birthdate: 09/02/2010 Tattoo: 0145 Bull 16722427  
 Woodhill Foresight Papa Forte 1921  
**CCC Foresight 7013** Bon View Gammer 85  
 CCC Miss Design 1007 B/R New Design 036  
 CCC Miss Right 9017  
 Shaw Traveler 4603 California Traveler  
**S M R Miss Traveler 710** Shaw Lady Alliance 2034M  
 Shaw Lady Traveler 4027P W 8180 Traveler 0354  
 4 S Majestic Nelle 795

BW	CED	BEPD	WW	YW	MILK
75	10	-0.5	40	76	23
SC	MARB	REA	\$EN	\$W	\$B
			+38	27.69	

In addition to calving ease and low birth weight, these Foresight sons will provide a lot of growth, carcass merit, and sire females that you will want to retain. Top 10% CED, 10% BW. ¾ brother to lot #28.

## 32 COMMERCIAL BULL [NHC]

Birthdate: 09/09/2010 Tattoo: 0146 Bull Commercial  
 Woodhill Foresight Papa Forte 1921  
**CCC Foresight 7013** Bon View Gammer 85  
 CCC Miss Design 1007 B/R New Design 036  
 CCC Miss Right 9017  
 Twin Valley Precision E161 G A R Precision 1680  
**Thomas Lucy 3464** W C C Blackcap C9  
 Thomas Lucy 9605 A A R New Trend  
 Thomas Lucy 2104

BW	CED	BEPD	WW	YW	MILK
92	7	1.5	45	81	25
SC	MARB	REA	\$EN	\$W	\$B
.83	.69	.45	-3.02	28.49	72.43

The EPD's above are estimated, and are an average of the Sire and Dam EPD's. This bull is a powerhouse. He had an individual WR of 116. His dam has a WR Avg. of 105 and a YR Avg. of 110.

# SPRING YEARLING ANGUS

## 33 S M R TANK [NHF]

Birthdate: 12/30/2010 Tattoo: 1005 Bull 16893702  
 Baldrige Kaboom K243 KCF Jauer 353 Traveler 589 27  
**Connealy Thunder** Pleasanta of Conanga 736  
 Parka of Conanga 241 Bon View Bando 598  
 Riverbend Drover Partina of Conanga 6237  
**Riverbend Blackbird S496** B C C Bushwacker 41-93  
 Riverbend Blackbird 4583 B C C Ariel 707  
 Davis Yr Blackbird 558H

BW	CED	BEPD	WW	YW	MILK
78	9	-0.6	53	95	31
SC	MARB	REA	\$EN	\$W	\$B
.29	.31	.63	-14.09	35.28	55.71

One of the best bulls we have ever raised. A standout since birth, he is always easy to spot in the pen. His dam is arguably our best Angus cow. Her maternal grandam is the famous \$500,000 Davis Yr Blackbird cow. "Tank's" dam boasts a BR Avg. of 98, WR Avg. of 115, are YR Avg. of 112 on three calves. Tank weighed 864 pounds at weaning and had an individual WR of 117. A definite herd bull prospect with very balanced EPDs. Top 15% CED, 10% BW, 25% WW, 25% YW, 4% Milk, 10% RE, 4% \$W.



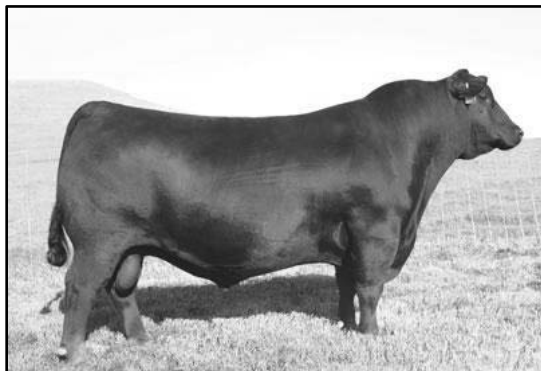
S M R Tank – Lot 33 – prior to weaning on summer range

## 34 S M R PIONEER 1008

Birthdate: 01/01/2011 Tattoo: 1008 Bull 16867506  
 S A V Final Answer 0035 Sitz Traveler 8180  
**S A V Pioneer 7301** S A V Emulous 8145  
 S A V Blackbird 5297 Boyd New Day 8005  
 Mytty In Focus S A V Blackbird 1082  
**S M R Miss In Focus 9012** S A F Focus of E R  
 Shaw Lady Traveler 4049P Mytty Countess 906  
 W 8180 Traveler 0354  
 W Lady 616 Image 1304

BW	CED	BEPD	WW	YW	MILK
72	11	-0.6	52	94	27
SC	MARB	REA	\$EN	\$W	\$B
			-11.00	32.22	

We are excited about these Pioneer calves. We see Pioneer as one of Final Answer's best sons. Consider this Pioneer son out of an In Focus daughter, sure fire calving ease, maternal, and growth. Individual WR of 108, out of a 1<sup>st</sup> calf heifer. Top 5% CED, 10% BW, 10% \$W.



S A V Pioneer 7301 – Sire of lots 34, 36, 39, 46, 49, 50, 54



S M R Final Answer 1014 with his 1<sup>st</sup> calf Dam – Lot 35

## 35 S M R FINAL ANSWER 1014

Birthdate: 01/03/2011 Tattoo: 1014 Bull 16867381  
 Sitz Traveler 8180 G D A R Traveler 71  
**S A V Final Answer 0035** Sitz Everelda Entense 1137  
 S A V Emulous 8145 Bon View Bando 598  
 Riverbend Direction S156 S A V Sky Emulous 2124  
**S M R Bell 9052** C A Future Direction 5321  
 Bear Mtn Bell 3129 Three Trees Entense 567G  
 S A F 598 Bando 5175  
 Foote Acres Bell 108K

BW	CED	BEPD	WW	YW	MILK
82	7	1.9	52	92	28
SC	MARB	REA	\$EN	\$W	\$B
			-11.42	29.90	

These Final Answer calves are tough to beat. This one comes from a good heifer, who has a maternal sister in the Riverbend Ranch herd. This bull had an individual WR of 105.

## 36 S M R PIONEER 1015

Birthdate: 01/04/2011 Tattoo: 1015 Bull 16867521  
 S A V Final Answer 0035 Sitz Traveler 8180  
**S A V Pioneer 7301** S A V Emulous 8145  
 S A V Blackbird 5297 Boyd New Day 8005  
 TC Stockman 365 S A V Blackbird 1082  
**Rhodes Bonnie Stock 16** TC Stockman  
 Rhodes Moneyline Bonnie TC Pride 0014  
 Rhodess Moneyline Bonnie Krugerrands Moneyline  
 Rhodes Black Bonnie 21R

BW	CED	BEPD	WW	YW	MILK
96	1	4.3	51	92	24
SC	MARB	REA	\$EN	\$W	\$B
1.09	.39	.51	-5.22	24.03	61.19

This is a big stout built bull. Kyle Colyer picked this bull's Pathfinder dam for us at a dispersal sale. She has a WR Avg. of 104 on 8 calves. This bull weaned at 773 pounds and has an individual WR of 108.

## 37 S M R IN FOCUS 1016

Birthdate: 01/03/2011 Tattoo: 1016 Bull 1686480  
 S A F Focus of E R S A F Fame  
**Mytty In Focus** G D A R Forever Lady 246  
 Mytty Countess 906 Sitz Alliance 6595  
 Woodhill Foresight Bladridge Countess 357  
**S M R Blossom 9022** Papa Forte 1921  
 J/M Blossom 538 Bon View Gammer 85  
 Holiday Paradox 3128  
 Spring Cove Blossom 229

BW	CED	BEPD	WW	YW	MILK
83	5	2.5	56	97	27
SC	MARB	REA	\$EN	\$W	\$B
			-12.19	29.78	

A nice In Focus son out of a really good first calf heifer. This bull had an individual WR of 112. A lot of growth potential in this pedigree with some great female makers too. Top 15% WW, 20% YW.

# 38 S M R TOTAL 1022

Birthdate: 01/05/2011 Tattoo: 1022 Bull 16867335  
 Sitz Alliance 6595 Sitz Travler 8180  
**K C F Bennett Total** Sitz Barbamare Jet 2698  
 Ext of Conanga 6790 N Bar Emulation EXT  
 Lady Enchtriss of Conanga  
 CCC Foresight 7013 Woodhill Foresight  
**S M R Miss Foresight 9038** CCC Miss Design 1007  
 S M R Miss Traveler 710 Shaw Traveler 4603  
 Shaw Lady Traveler 4027P

BW	CED	BEPD	WW	YW	MILK
83	8	0.7	40	75	21
SC	MARB	REA	\$EN	\$W	\$B
			+3.54	26.79	

Top 25% CED, 25% BW, 25% \$EN. Out of a 1<sup>st</sup> calf heifer. Will work on most heifers.

# 39 S M R PIONEER 1024

Birthdate: 01/06/2011 Tattoo: 1024 Bull 16867501  
 S A V Final Answer 0035 Sitz Traveler 8180  
**S A V Pioneer 7301** S A V Emulous 8145  
 S A V Blackbird 5297 Boyd New Day 8005  
 S A V Blackbird 1082  
 N Bar Prime Time D806 Gardens Prime Time  
**S M R Lady Eraline 9040** N Bar Miss Emulous A404  
 Bear Mtn Lady Eraline 6064 Bon View New Design 878  
 Bear Mtn Lady Eraline 3100

BW	CED	BEPD	WW	YW	MILK
74	8	1.2	50	95	26
SC	MARB	REA	\$EN	\$W	\$B
			-10.08	28.14	

We bred Pioneer to quite a few heifers and never had to pull any of them. This bull should work on heifers too. These Pioneer sons will provide a lot of growth. This bull had an individual WR of 106.

# 40 S M R PRIME TIME 1027

Birthdate: 01/06/2011 Tattoo: 1024 Bull 16867501  
 S A V Final Answer 0035 Sitz Traveler 8180  
**S A V Pioneer 7301** S A V Emulous 8145  
 S A V Blackbird 5297 Boyd New Day 8005  
 S A V Blackbird 1082  
 CCC Foresight 7013 Woodhill Foresight  
**S M R Miss Foresight 9038** CCC Miss Design 1007  
 S M R Miss Traveler 708 Shaw Traveler 4603  
 Shaw Lady Traveler 4102P

BW	CED	BEPD	WW	YW	MILK
77	10	-0.2	38	71	23
SC	MARB	REA	\$EN	\$W	\$B
			3.21	28.45	

A definite heifer bull candidate. Out of a 1<sup>st</sup> calf heifer. Individual WR of 105. Top 10% CED, 10% BW.

# 41 S M R PREDESTINED 1028

Birthdate: 01/07/2011 Tattoo: 1028 Bull 16867487  
 B/R New Design 036 V D A R New Trend 315  
**G A R Predestined** B/R Blackcap Empress 76  
 G A R Ext 4206 N Bar Emulation EXT  
 G A R 6807 Traveler 1432  
 G A R Integrity Bon View New Design 1407  
**CCC Ms Integrity 6059** G A R Precision 1019  
 CCC VRD Lady 2052 Vermilion Dateline 7078  
 CCC Miss Fullback 8030

BW	CED	BEPD	WW	YW	MILK
89	4	3.6	46	86	26
SC	MARB	REA	\$EN	\$W	\$B
.25	.81	.57	-4.00	25.43	73.43

This is a bull that will catch your attention. His dam is a really pretty cow who was a WR Avg. of 109 and a YW Avg. of 108 on 4 calves, with a son to Bruce Ranch and two daughters in the herd. This bull had a wean weight of 789 and an individual ratio of 109. Top 5% Marb, 15% REA, 5% \$B.

# 42 S M R THUNDER 1029 [CAC]

Birthdate: 01/09/2011 Tattoo: 1029 Bull 16867437  
 Baldrige Kaboom K243 KCF Jauer 353 Traveler 589 27  
**Connealy Thunder** Pleasanta of Conanga 736  
 Parka of Conanga 241 Bon View Bando 598  
 G A R Retail Product Partina of Conanga 6237  
**Riverbend Forever Lady S387** G A R Precision 1680  
 Riverbend Forever Lady 4342 G A R Ext 4927  
 Bon View New Design 208  
 Riverbend Forever Lady 246

BW	CED	BEPD	WW	YW	MILK
78	9	-0.6	41	82	26
SC	MARB	REA	\$EN	\$W	\$B
.55	.35	.35	-3.90	28.48	48.98

These Thunder calves are wide, moderate, and stout built. This one comes out of a good cow we bought from Riverbend. This bull will work on heifers. Top 15% CED, 10% BW.

# 43 S M R FINAL ANSWER 1034

Birthdate: 01/10/2011 Tattoo: 1034 Bull 16867388  
 Sitz Traveler 8180 G D A R Traveler 71  
**S A V Final Answer 0035** Sitz Everelda Entense 1137  
 S A V Emulous 8145 Bon View Bando 598  
 Mytty In Focus S A V Sky Emulous 2124  
**S M R Erica 857** S A F Focus of E R  
 Thomas Erica 6133 Mytty Countess 906  
 G A R US Premium Beef  
 Thomas Erica 4003

BW	CED	BEPD	WW	YW	MILK
78	11	-0.2	53	93	24
SC	MARB	REA	\$EN	\$W	\$B
.95	.49	.29	-4.80	34.79	55.68

We have had great success mating In Focus daughters to Final Answer. This bull provides sure fire calving ease, lots of growth, and he is bred to thrive in tough conditions. Top 10% CED, 10% BW, 25% WW, 20% SC, 5% \$W. Full brother to MacKenzie Ranch.



S M R Final Answer 1034 - Lot 43 - on feed at Simplot

# 44 S M R BISMARCK 1039

Birthdate: 01/12/2011 Tattoo: 1039 Bull 16867540  
 G A R Grid Maker G D A R Traveler 044  
**S A V Bismarck 5682** G A R Precision 2536  
 S A V Abigale 0451 Schoenes Fix It 826  
 Mytty In Focus S A V Abigale 6062  
**S M R Miss In Focus 809** S A F Focus of E R  
 CCC Ms Dan Boy 6066 Mytty Countess 906  
 Connealy Danny Boy  
 CCC Miss Stockman 8037

BW	CED	BEPD	WW	YW	MILK
79	12	-0.1	52	92	25
SC	MARB	REA	\$EN	\$W	\$B
1.18	.28	.42	-5.23	34.77	55.50

This is our first group of Bismarck calves and they are really good. This one is big and stout and is out of a great 2<sup>nd</sup> calf In Focus daughter. She has a BR Avg. of 99, and WR Avg. of 105 on two calves, with one son to Weldon Branch. This calf has an individual WR of 105. Top 3% CED, 10% BW, 10% SC, 5% \$W. This bull covers all the basis and has a lot of eye appeal.

# 45 S M R TOTAL 1040

Birthdate: 01/12/2011 Tattoo: 1040 Bull 16867336  
 Sitz Alliance 6595 Sitz Travler 8180  
**K C F Bennett Total** Sitz Barbaramere Jet 2698  
 Ext of Conanga 6790 N Bar Emulation EXT  
 Lady Enchtress of Conanga  
 Connealy Danny Boy Connealy Timeline  
**CCC Ms Dan Boy 6066** Energy of Conanga 4851  
 CCC Miss Stockman 8037 TC Stockman 365  
 Jackie of P A R 735

BW	CED	BEPD	WW	YW	MILK
89	6	1.6	44	80	18
SC	MARB	REA	\$EN	\$W	\$B
.59	.23	.31	6.14	27.47	52.60

This bull is stout built, and extremely deep with a lot of rib. This bull will work in rough country – look at the great sires in his pedigree. He has an individual WR of 105, and weighed 752 at weaning.

# 46 S M R PIONEER 1042

Birthdate: 01/13/2011 Tattoo: 1042 Bull 16867512  
 S A V Final Answer 0035 Sitz Traveler 8180  
**S A V Pioneer 7301** S A V Emulous 8145  
 S A V Blackbird 5297 Boyd New Day 8005  
 S A V Blackbird 1082  
 Bluegrass Major Design 202 Bon View new Design 1407  
**Riverbend Ariel S666** Bluegrass Bonny 900 505  
 BCC Ariel K5 N Bar Emulation EXT  
 PLS 5201 Ariel B749

BW	CED	BEPD	WW	YW	MILK
93	3	3	50	91	20
SC	MARB	REA	\$EN	\$W	\$B
.30	.40	.55	.19	26.24	57.52

A lot of growth potential in this thick made Pioneer son. Pioneer combines two of our favorite sires with Final Answer and New Day.

# 47 S M R PREDESTINED 1046

Birthdate: 01/14/2011 Tattoo: 1046 Bull 16867484  
 B/R New Design 036 V D A R New Trend 315  
**G A R Predestined** B/R Blackcap Empress 76  
 G A R Ext 4206 N Bar Emulation EXT  
 G A R 6807 Traveler 1432  
 Nichols Extra K205 Nichols Extra H6  
**Bear Mtn Blackcap 7009** Nichols Black Heiress F346  
 Foote Acres Blackcap 96K TC Stockman 365  
 Foote Acres Blackcap 57C

BW	CED	BEPD	WW	YW	MILK
82	8	2.3	45	89	26
SC	MARB	REA	\$EN	\$W	\$B
.51	.70	.48	-6.42	25.28	72.08

This Predestined son will provide growth and improve your carcass quality. Top 25% CED, 10% Marb, 25% RE, 10% \$B. Maternal brother to Simplot.



S A V Bismarck 5682 – Sire of lots 44, 53, 62

# 48 S M R ROUNDUP 1047

Birthdate: 01/15/2011 Tattoo: 1047 Bull 16868549  
 HARB Pendleton 765 J H S A V Final Answer 0035  
**21AR Roundup** H A R B Black Lady 375 JH  
 21AR Blackbird Lady F645 B C C Bushwacker 41-93  
 21AR Blackbird Lady C645  
 Bon View New Design 878 B/R New Design 036  
**CCC Ms Design 6122** Bon View Gammer 85  
 CCC MS 6807 6031 D H D Traveler 6807  
 Spring Cove ScotchCap 061

BW	CED	BEPD	WW	YW	MILK
93	5	2.8	49	84	14
SC	MARB	REA	\$EN	\$W	\$B
.05	.31	.43	8.44	25.52	59.02

We have been impressed with these Roundup calves. This one is a big stout calf that is very well put together. A lot of exceptional cattle in this bull's pedigree.



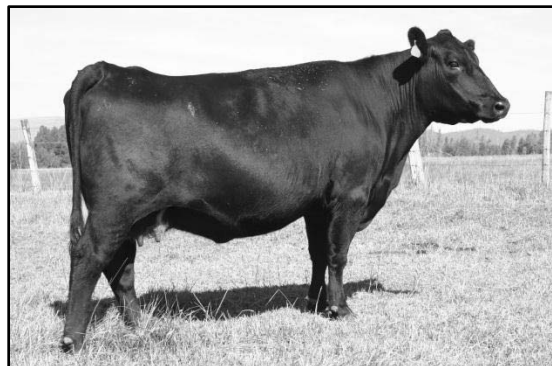
S M R Roundup 1047 – Lot 48 – on summer range prior to weaning

# 49 S M R PIONEER 1049

Birthdate: 01/15/2011 Tattoo: 1049 Bull 16867514  
 S A V Final Answer 0035 Sitz Traveler 8180  
**S A V Pioneer 7301** S A V Emulous 8145  
 S A V Blackbird 5297 Boyd New Day 8005  
 S A V Blackbird 1082  
 Wulffs Ext 6106 N Bar Emulation EXT  
**Thomas Adventure Girl 5707** Wulffs Erica Dianna C116  
 Thomas Adventure Girl 6140 Paramont Ambush 2172  
 Thomas Adventure Girl3410

BW	CED	BEPD	WW	YW	MILK
89	4	2.1	48	89	22
SC	MARB	REA	\$EN	\$W	\$B
.36	.49	.35	-.69	28.59	55.61

A maternal brother to Lot 4. This is another deep, stout Pioneer son.



Thomas Adventure Girl 5707 – Dam of lots 4 & 49

# 50 S M R PIONEER 1050

Birthdate: 01/15/2011 Tattoo: 1049 Bull 16867514  
 S A V Final Answer 0035 Sitz Traveler 8180  
**S A V Pioneer 7301** S A V Emulous 8145  
 S A V Blackbird 5297 Boyd New Day 8005  
 S A V Blackbird 1082  
 Bon View New Design 878 B/R New Design 036  
**Bear Mtn Lady Eraline 6064** Bon View Gammer 85  
 Bear Mtn Lady Eraline 3100 Hyline Right Time 338  
 Bear Mtn Lady Eraline 806

BW	CED	BEPD	WW	YW	MILK
86	6	2.1	50	97	26
SC	MARB	REA	\$EN	\$W	\$B
	.31	.51	-8.32	28.15	60.85

These Pioneer sons are very consistent phenotypically. They all have a lot of red meat, and eye appeal. This one is no exception. Dam of this bull has 3 daughters in the herd, and is the maternal grandam to lot 39.

# 51 S M R DASH 1052

Birthdate: 01/16/2011 Tattoo: 1052 Bull 16894434  
 Sitz Upward 307R Connealy Onward  
**Sitz Dash 10277** Sitz Henrietta Pride 81M  
 Sitz Everelda Entense 2665 O C C Emblazon 854E  
 Riverbend Access Sitz Everelda Entense 4948  
**Riverbend Everelda S365** Rockn D Ambush 1531  
 Riverbend Everelda 4009 Bon View Princess 207  
 Bon View New Design 878  
 Riverbend Entense 2096

BW	CED	BEPD	WW	YW	MILK
83	8	.9	47	87	25
SC	MARB	REA	\$EN	\$W	\$B
.54	.44	.36	-4.46	30.17	59.66

We have been using Upward for a few years now, and this year we have our first group of calves out of "Dash," who is sired by Upward with Emblazon as his maternal grand sire. We think ranchers will love these Dash calves. They are moderate, with a lot of maternal, and plenty of growth.

# 52 S M R RETAIL PRODUCT 1053

Birthdate: 01/16/2011 Tattoo: 1053 Bull 16893636  
 G A R Precision 1680 Tehama Bando 155  
**G A R Retail Product** 9J9 G A R 856  
 G A R Ext 4927 N Bar Emulation EXT  
 G A R Traveler 641  
 WK Midland 5065 BR Midland  
**S M R Eulima 835** WK Bonny 1108  
 Bear Mtn Eulima 6182 Bear Mtn Right Direction  
 Bear Mtn Eulima 3143

BW	CED	BEPD	WW	YW	MILK
85	5	2.7	39	78	22
SC	MARB	REA	\$EN	\$W	\$B
.57	.61	.60	2.88	22.92	66.41

Retail Product, often referred to as the "range bull" has done a good job for us. This bull is nicely built, and has a lot of length.

# 53 S M R BISMARCK 1055

Birthdate: 01/15/2011 Tattoo: 1055 Bull 16867539  
 G A R Grid Maker G D A R Traveler 044  
**S A V Bismarck 5682** G A R Precision 2536  
 S A V Abigale 0451 Schoenes Fix It 826  
 S A V Abigale 6062  
 Thomas Big Iron 5068 Wulffs Ext 6106  
**S M R Miss Liberty 871** Thomas Erica 3499  
 Thomas Miss Liberty 6510 Rito 112 of 2536 Rito 616  
 Thomas Miss Liberty 4269

BW	CED	BEPD	WW	YW	MILK
85	9	1.4	50	90	27
SC	MARB	REA	\$EN	\$W	\$B
.53	.32	.56	-3.27	36.08	56.54

A nice Bismarck son out of a really good 2<sup>nd</sup> calf heifer. Top 15% CED, 3% \$W.

# 54 S M R PIONEER 1056

Birthdate: 01/17/2011 Tattoo: 1056 Bull 16867509  
 S A V Final Answer 0035 Sitz Traveler 8180  
**S A V Pioneer 7301** S A V Emulous 8145  
 S A V Blackbird 5297 Boyd New Day 8005  
 S A V Blackbird 1082  
 G A R Predestined B/R New Design 036  
**S M R Lucy 845** G A R Ext 4206  
 Thomas Lucy 31105 Twin Valley Precision E161  
 Thomas Lucy 0698

BW	CED	BEPD	WW	YW	MILK
83	5	2.5	58	105	27
SC	MARB	REA	\$EN	\$W	\$B
.69	.53	.65	-13.19	30.47	66.46

A very nice Pioneer son out of a 2<sup>nd</sup> calf heifer that we think has a very bright future ahead of her. She has a WR Avg. of 104 on 2 calves, with a son to Kraupp Livestock. This Pioneer son had an individual WR of 110. Top 10% WW, 10% YW, 20% SW, 20% \$B.



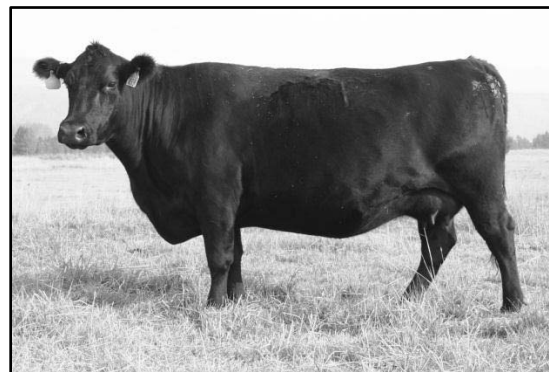
S M R Pioneer 1056 – Lot 54 – on summer range prior to weaning

# 55 S M R UPWARD 1057

Birthdate: 01/18/2011 Tattoo: 1057 Bull 16872429  
 Connealy Onward Connealy Lead On  
**Sitz Upward 307J** Altune of Conanga 6104  
 Sitz Henrietta Pride 81M Sitz Value 7097  
 Sitz Henrietta Pride 1370  
 Fintny of Graham 47539 Fintny of Graham 32786  
**Thomas Lucy 4566** Graham Erica 281  
 Thomas Lucy 1122 Sitz Traveler 8180  
 Thomas Lucy 9642

BW	CED	BEPD	WW	YW	MILK
86	7	1.6	59	109	32
SC	MARB	REA	\$EN	\$W	\$B
.93	.26	.45	-20.09	33.10	64.67

A super Upward son. The dam of this bull has raised some really great calves for us, with one daughter in the herd and a son to Desert View Ranch, and another son to DG Cattle. Top 10% WW, 4% YW, 10% SW, 25% \$B.



Thomas Lucy 4566 – Dam of S M R Upward 1057 – Lot 55

# 56 S M R FINAL ANSWER 1059

Birthdate: 01/18/2011 Tattoo: 1059 Bull 16872326  
 Sitz Traveler 8180 G D A R Traveler 71  
**S A V Final Answer 0035** Sitz Everelda Entense 1137  
 S A V Emulous 8145 Bon View Bando 598  
 Bear Mtn Owyhee 5012 S A V Sky Emulous 2124  
**Bear Mtn Gal 7157** Rito 112 of 2536 Rito 616  
 Bear Mtn Barbara 2112  
 Bear Mtn Gal 91L Twin Valley Precision E161  
 Foote Acres Gal 190E

BW	CED	BEPD	WW	YW	MILK
78	7	.8	55	98	20
SC	MARB	REA	\$EN	\$W	\$B
.65	.40	.40	-2.06	32.60	56.73

This bull can be used on heifers, and will still provide a lot of growth. Maternal brother to Kraupp Livestock. Top 25% BW, 20% WW, 20% YW, 10% \$W.

# 57 S M R THUNDER 1061

Birthdate: 01/19/2011 Tattoo: 1061 Bull 16867436  
 Baldridge Kaboom K243 KCF Jauer 353 Traveler 589 27  
**Connealy Thunder** Pleasanta of Conanga 736  
 Parka of Conanga 241 Bon View Bando 598  
 G A R Solution Partina of Conanga 6237  
**S M R Rita 836** S S Traveler 6807 T510  
 DRMCTR 112 Rita 6246 G A R New Design 50  
 Rito 112 of 2536 Rito 616  
 DRMCTR 1407 Design 2B8

BW	CED	BEPD	WW	YW	MILK
89	6	1.3	47	89	28
SC	MARB	REA	\$EN	\$W	\$B
-.10	.56	.45	-8.87	29.34	59.45

A nice Thunder son out of a 2<sup>nd</sup> calf heifer who raised one of our best bulls last year, sold to Randy Roberts. This bull will provide a lot of growth potential.



Connealy Thunder – Sire of lots 2, 33, 42, 57

# 58 S M R PREDESTINED 1062

Birthdate: 01/19/2011 Tattoo: 1062 Bull 16880417  
 B/R New Design 036 V D A R New Trend 315  
**G A R Predestined** B/R Blackcap Empress 76  
 G A R Ext 4206 N Bar Emulation EXT  
 Sitz Tradition RLS 8702 G A R 6807 Traveler 1432  
**Thomas Lucy 6296** Vermilion Dateline 7078  
 Thomas Lucy 3799 R L S Eisa Evergreen 5018  
 Sitz Traveler 8180  
 Thomas Lucy 3109

BW	CED	BEPD	WW	YW	MILK
82	7	1.8	51	96	22
SC	MARB	REA	\$EN	\$W	\$B
.61	.79	.42	-3.40	29.14	69.20

A Predestined son that is sure to get some attention. These Predestined sons are consistently moderate framed with a lot of muscle expression. They gain well in the feedlot, and perform on the rail.

# 59 S M R UPWARD 1072

Birthdate: 01/28/2011 Tattoo: 1072 Bull 16867520  
 Connealy Onward Connealy Lead On  
**Sitz Upward 307J** Altune of Conanga 6104  
 Sitz Henrietta Pride 81M Sitz Value 7097  
 Bear Mtn Owyhee 5012 Sitz Henrietta Pride 1370  
**Bear Mtn Dolly 7111** Rito 112 of 2536 Rito 616  
 Foote Acres Dolly 278K S A F Fame  
 Foote Acres Doly 313H

BW	CED	BEPD	WW	YW	MILK
84	4	2.5	59	110	29
SC	MARB	REA	\$EN	\$W	\$B
.87	.50	.51	-18.54	28.62	74.62

If you need to add some growth and pounds to your calves, this bull will get the job done. He has a maternal brother to A.L. Cattle. Top 10% WW, 3% YW, 5% \$B.

# 60 S M R DASH 1075

Birthdate: 01/30/2011 Tattoo: 1075 Bull 16868562  
 Sitz Upward 307R Connealy Onward  
**Sitz Dash 10277** Sitz Henrietta Pride 81M  
 Sitz Everelda Entense 2665 O C C Emblazon 854E  
 Rito 112 of 2536 Rito 616 Sitz Everelda Entense 4948  
**DRMCTR 112 Rita 6246** Rockn D Ambush 1531  
 DRMCTR 1407 Design 2B86 Bon View Princess 207  
 Bon View New Design 1407  
 G A R Precision 1827

BW	CED	BEPD	WW	YW	MILK
93	6	2.2	45	84	27
SC	MARB	REA	\$EN	\$W	\$B
.21	.59	.48	-6.15	27.12	64.52

A Dash son with a lot of growth, maternal, and carcass.

# 61 S M R FINAL ANSWER 1078

Birthdate: 01/31/2011 Tattoo: 1078 Bull 16929852  
 Sitz Traveler 8180 G D A R Traveler 71  
**S A V Final Answer 0035** Sitz Everelda Entense 1137  
 S A V Emulous 8145 Bon View Bando 598  
 Woodhill Foresight S A V Sky Emulous 2124  
**S M R Zara 8003** Papa Forte 1921  
 Bear Mtn Zara 5216 Bon View Gammer 85  
 Boyd New Day 8005  
 Beryessa Zara

BW	CED	BEPD	WW	YW	MILK
68	11	-0.4	56	98	23
SC	MARB	REA	\$EN	\$W	\$B
			-8.08	32.88	

A definite heifer bull prospect out of a 1<sup>st</sup> calf Foresight daughter. A lot of growth, calving ease, and maternal in this pedigree. Top 10% CED, 10% BW, 15% WW, 15% YW, 10% \$W.



Riverbend Everelda 3344 with Sitz Upward daughter  
 Out of the famous Sitz Everelda family - Maternal cow family of Sitz Dash

## 62 S M R BISMARCK 1080

Birthdate: 02/02/2011 Tattoo: 1080 Bull 16867541  
 G A R Grid Maker G D A R Traveler 044  
**S A V Bismarck 5682** G A R Precision 2536  
 S A V Abigale 0451 Schoenes Fix It 826  
 S A V Abigale 6062  
 Shaw Right Design 2353 Bon View New Design 878  
**Shaw Lady Traveler 4313** W Miss Traveler 716  
 W Lady Traveler 9334 Sitz Traveler 8180  
 C R Lucy 844

BW	CED	BEPD	WW	YW	MILK
83	11	0.2	48	78	24
SC	MARB	REA	\$EN	\$W	\$B
.66	.21	.29	1.00	35.90	41.93

This Bismarck son is a very nice all around package. He will work on heifers, and will sire calves that will grow, and his daughters will be keepers. His dam has loads of milk, always breeds back, and is very efficient. She has two daughters in the herd and sons to Bruce Ranch and Juniper Ranch. Top 10% CED, 15% BW, 3% \$W. Individual WR of 104.

## 63 S M R FINAL ANSWER 1082

Birthdate: 02/03/2011 Tattoo: 1082 Bull 16867391  
 Sitz Traveler 8180 G D A R Traveler 71  
**S A V Final Answer 0035** Sitz Everelda Entense 1137  
 S A V Emulous 8145 Bon View Bando 598  
 S A V Sky Emulous 2124  
 B/R New Frontier 095 B/R New Design 036  
**Sawtooth Sonya 102N** White Fence Pride H1  
 4 U Miches Oh My T C Div 350 TC Dividend 963  
 4 U Ext Lass 296

BW	CED	BEPD	WW	YW	MILK
82	7	1.8	49	88	24
SC	MARB	REA	\$EN	\$W	\$B
1.07	.46	.24	-3.12	30.46	56.68

A growthy Final Answer son out of a deep powerful cow. Top 15% SC, 25% \$W.

## 64 S M R UPWARD 1083

Birthdate: 02/04/2011 Tattoo: 1083 Bull 16867524  
 Connealy Onward Connealy Lead On  
**Sitz Upward 307J** Altune of Conanga 6104  
 Sitz Henrietta Pride 81M Sitz Value 7097  
 N Bar Emulation EXT Sitz Henrietta Pride 1370  
**BCC Ariel K5** Emulation N Bar 5522  
 PLS 5204 Ariel B749 N Bar Primrose 2424  
 R R Traveler 5204  
 PLS T Ariel Z608

BW	CED	BEPD	WW	YW	MILK
78	9	0.7	51	99	28
SC	MARB	REA	\$EN	\$W	\$B
.67	.31	.31	-12.80	29.52	61.35

An Upward son that will work on heifers. His dam comes from the great EXT bull. Top 15% CED, 25% BW, 15% YW.

## 65 S M R MATRIX 1085

Birthdate: 02/05/2011 Tattoo: 1085 Bull 16867394  
 O C C Emblazon 854E D H D Traveler 6807  
**B C Matrix 4132** Dixie Erica of C H 1019  
 CAF Pure Pride Ext 99 N Bar Emulation EXT  
 Bon View New Design 878 Gibbet Hill Pure Pride CF  
**Thomas Elsa 5372** B/R New Design 036  
 Thomas Elsa 1645 Bon View Gammer 85  
 G A R Precision 1680  
 Thomas Elsa 3272

BW	CED	BEPD	WW	YW	MILK
82	9	1.5	45	83	20
SC	MARB	REA	\$EN	\$W	\$B
.44	.25	.19	2.94	28.20	45.24

Maternal brother to lot 6. This bull's mother has a WR Avg. of 104 on 5 calves. Matrix is bred to excel in harsh environments. Top 15% CED.

## 66 S M R DIRECTION 1090

Birthdate: 02/13/2011 Tattoo: 1090 Bull 16870106  
 Riverbend Direction S156 C A Future Direction 5321  
**S M R Direction 9106** Three Trees Entense 567G  
 Thomas Lucy 6877 Wulffs Ext 6106  
 Woodhill Foresight Thomas Lucy 3832  
**S M R Zara 8004** Papa Forte 1921  
 Bear Mtn Zara 5216 Bon View Gammer 85  
 Boyd New Day 8005  
 Berryessa Zara

BW	CED	BEPD	WW	YW	MILK
61	13	-1.4	47	84	25
SC	MARB	REA	\$EN	\$W	\$B
			-4.93	32.11	

Calving ease deluxe. This calf has a lot of eye appeal. He is also bred for growth, and his carcass quality will be very good. Top 2% CED, 3% BW, 15% \$W. Out of a 1<sup>st</sup> calf heifer.

## 67 S M R RITO 1105

Birthdate: 03/05/2011 Tattoo: 1105 Bull 16873950  
 Sinclair Rito Legacy 3R9 R R Rito 707  
**Riverbend 3R9 Rito 1401U** Ideal 4465 of 6807 4286  
 G Bar Diana 1525 S A F 598 Bando 5175  
 Wulffs Erica Dianna C116  
 Mytty In Focus S A F Focus of E R  
**S M R Everelda 806** Mytty Countess 906  
 Riverbend Everelda S365 Riverbend Access  
 Riverbend Everelda 4009

BW	CED	BEPD	WW	YW	MILK
69	10	-0.5	46	81	20
SC	MARB	REA	\$EN	\$W	\$B
.43	.57	.13	2.38	30.73	54.41

Another heifer bull candidate. This particular bull has an individual WR of 108, and his 2<sup>nd</sup> calf dam has a WR Avg. of 104 on 2 calves, with a son to D & G Cattle. Top 10% CED, 10% BW, 20% \$W.

## 68 S M R DIRECTION 1106

Birthdate: 03/06/2011 Tattoo: 1106 Bull 16873951  
 Riverbend Direction S156 C A Future Direction 5321  
**S M R Direction 9106** Three Trees Entense 567G  
 Thomas Lucy 6877 Wulffs Ext 6106  
 G A R Retail Product Thomas Lucy 3832  
**S M R Ms. Retail Product 9002** G A R Precision 1680  
 CCC Ms Dan Boy 6066 G A R Ext 4927  
 Connealy Danny Boy  
 CCC Miss Stockman 8037

BW	CED	BEPD	WW	YW	MILK
73	10	0.3	44	81	25
SC	MARB	REA	\$EN	\$W	\$B
			-3.77	28.92	

Calving ease with growth, maternal, and carcass. Top 10% CED, 15% BW.

## 69 S M R IRON MOUNTAIN 1107

Birthdate: 03/08/2011 Tattoo: 1107 Bull 16873954  
 TC Gridiron 258 G A R Grid Maker  
**S A V Iron Mountain 8066** TC Blackbird 7049  
 S A V Madame Pride 3249 S A V 8180 Traveler 004  
 S A V Madame Pride 8264  
 Boyd New Day 8005 A A R New Trend  
**Thomas Eileen 5413** S V F Forever Lady 57D  
 Thomas Eileen 2193 Twin Valley Precision E161  
 Thomas Eileen 0079

BW	CED	BEPD	WW	YW	MILK
72	13	0.6	51	94	19
SC	MARB	REA	\$EN	\$W	\$B
.27	.43	.39	-.45	29.61	55.54

Iron Mountain is one of the hottest young sires in the industry. We have been very happy with his calves. This calf will sure work on heifers, and he provides a lot of growth. Top 2% CED, 20% BW, 25% YW.

# 70 S M R IRON MOUNTAIN 1109

Birthdate: 03/11/2011 Tattoo: 1109 Bull 16877342  
 TC Gridiron 258 G A R Grid Maker  
**S A V Iron Mountain 8066** TC Blackbird 7049  
 S A V Madame Pride 3249 S A V 8180 Traveler 004  
 G A R Grid Maker S A V Madame Pride 8264  
**Thomas Patricia 4777** G D A R Traveler 044  
 Thomas Patricia 1176 G A R Precision 2536  
 Scotch Cap  
 Thomas Patricia 7029

BW	CED	BEPD	WW	YW	MILK
96	2	4.7	66	113	21
SC	MARB	REA	\$EN	\$W	\$B
.61	.34	.52	-9.98	26.68	58.11

This is one of my favorite calves this year. He sometimes gets overlooked because he is younger than many of his peers. He is line bred, with Grid Maker on both the top and bottom of his pedigree. He is out of an exceptional Thomas Angus cow. He weighed 741 on weaning day and had an individual WR of 122. His dam has a WR Avg. of 111 on 6 calves. An exceptional growth prospect.

# 72 S M R FORESIGHT 1117

Birthdate: 03/20/2011 Tattoo: 1117 Bull 16887489  
 Woodhill Foresight Papa Forte 1921  
**CCC Foresight 7013** Bon View Gammer 85  
 CCC Miss Design 1007 B/R New Design 036  
 Bluegrass Major Design 202 CCC Miss Right 9017  
**Riverbend Everelda T561** Bon View New Design 1407  
 Riverbend Everelda 3344 Bluegrass Bonny 900 505  
 Tehama Riverbend 802  
 Sitz Everelda Entense 2945

BW	CED	BEPD	WW	YW	MILK
81	8	0.5	47	80	23
SC	MARB	REA	\$EN	\$W	\$B
.36	.68	.61	-.81	31.52	73.59

A nice young Foresight son with a lot of growth, and exceptional carcass. Top 25% CED, 20% BW, 20% Marb, 10% RE, 15% \$W, 5% \$B.

# 71 S M R RITO 1116 [INHF]

Birthdate: 03/19/2011 Tattoo: 1116 Bull 16891188  
 Sinclair Rito Legacy 3R9 R R Rito 707  
**Riverbend 3R9 Rito 1401U** Ideal 4465 of 6807 4286  
 G Bar Diana 1525 S A F 598 Bando 5175  
 Wulffs Erica Dianna C116  
 Ironwood New Level Ironwood New Design 022  
**Deer Valley Eileen 6202** G A R Precision 2536  
 Thomas Eileen 31007 C A Future Direction 5321  
 Thomas Eileen 1532

BW	CED	BEPD	WW	YW	MILK
98	4	2.4	39	71	23
SC	MARB	REA	\$EN	\$W	\$B
.33	.54	.42	2.63	24.76	55.12

One of the youngest bulls in the sale. This guy is a big stout beef bull. He is a real power house that will put some serious growth on calves. His dam is a deep powerful cow with a beautiful udder. Individual WR of 106.



CCC Foresight 7013 – Sire of lots 26, 27, 28, 29, 30, 31, 32, 72

## CONSIGNED ANGUS YEARLING – ANDY DUCKETT

# 73 DP MOSTLY MITTY 101

Birthdate: 02/05/2011 Tattoo: 702 Bull 17107546  
 Mytty In Focus S A F Focus of E R  
**Griffeth In Focus 775** Mytty Countess 906  
 Griffeth E1 775 Griffeth Ext 161  
 Griffeth Focus 597  
 Griffeth Sitz 8180 443 Sitz Traveler 8180  
**Griffeth 8180-1-702** Griffeth Dividend 443  
 Griffeth Fly Travler 560 Whitestone Fly Traveler  
 Griffeth Paramount Ambush

BW	CED	BEPD	WW	YW	MILK
68	8	.4	42	75	28
SC	MARB	REA	\$EN	\$W	\$B
			-5.06	29.82	

¾ brother to lots 74 and 75, ½ brother to lot 76. Out of a Pathfinder dam. Top 25% CED, 20% BW. These bulls are bred to work in rough country, with calving ease, maternal, and easy fleshing bred in.

# 74 DP MOSTLY MITTY 102

Birthdate: 02/06/2011 Tattoo: 716 Bull 17107543  
 Mytty In Focus S A F Focus of E R  
**Griffeth In Focus 775** Mytty Countess 906  
 Griffeth E1 775 Griffeth Ext 161  
 Griffeth Focus 597  
 Griffeth Sitz 8180 443 Sitz Traveler 8180  
**Griffeth 8180-1-716** Griffeth Dividend 443  
 Griffeth Decatur 611 S S Decatur 55H  
 Griffeth Fly Traveler 541

BW	CED	BEPD	WW	YW	MILK
71	8	.6	43	77	23
SC	MARB	REA	\$EN	\$W	\$B
			0.11	28.87	

Calving ease bull. Top 25% CED, 20% BW. A nice big stout long individual.

# 75 DP MOSTLY MITTY 103

Birthdate: 02/19/2011 Tattoo: 695 Bull 17107544  
 Mytty In Focus S A F Focus of E R  
**Griffeth In Focus 775** Mytty Countess 906  
 Griffeth E1 775 Griffeth Ext 161  
 Griffeth Focus 597  
 Griffeth Sitz 8180 443 Sitz Traveler 8180  
**Griffeth 8180-1-695** Griffeth Dividend 443  
 Griffeth Ext 526 N Bar Emulation EXT  
 Mel ORama Scotch Cap 227

BW	CED	BEPD	WW	YW	MILK
76	4	2.2	42	74	23
SC	MARB	REA	\$EN	\$W	\$B
			1.26	26.48	

¾ brother to lots 74 & 75. All of these bulls were summered in steep rugged country and will do well in that environment.

# 76 DP MOSTLY MITTY 104

Birthdate: 03/07/2011 Tattoo: 825 Bull 17102358  
 Mytty In Focus S A F Focus of E R  
**Griffeth In Focus 775** Mytty Countess 906  
 Griffeth E1 775 Griffeth Ext 161  
 Griffeth Focus 597  
 Griffete Focus 454 S A F Focus of E R  
**Griffeth FO1 825** Griffeth Ex 454  
 Griffeth 81801-536-652 Griffeth Sitz 8180 443  
 Griffeth 8180-536

BW	CED	BEPD	WW	YW	MILK
70	6	1.7	43	74	30
SC	MARB	REA	\$EN	\$W	\$B
			-7.11	29.56	

Line bred to the great Focus of E R bull with Ext and Traveler in the pedigree. Out of a Pathfinder dam.

## SPRING YEARLING HEREFORDS

# 77 S M R RIBEYE 1013

Birthdate: 01/03/2011 Tattoo: 1013 Bull 43165129 - Polled  
 KCF Bennett 3008 M 326 RRR Mr Felt 3008  
**S H F Rib Eye M326 R117** KCF Miss 459 F284  
 HVH Miss Hudson 83K 8M MSU MF Hudson 19H  
 Sun Vindy Miss 83K  
 UPS TCC Nitro 1ET GH Neon 17N  
**S M R Miss Nitro 9057** LCC Two Timin 438 ET  
 /S Lady Victor 4062P Sun Victor 37J  
 /S Lady Endurance 136L

BW	CED	BEPD	WW	YW	MILK
68	2.7	2.6	51	79	18
SC	MARB	REA	\$BMI	\$CEZ	\$CHB
1.2	.18	.31	25	19	27

A goggle eyed polled bull out of a polled cow. This bull will sure work on heifers. Top 15% CED, 25% BW, 25% WW, 2% BMI, 5% CEZ, 10% CHB.

# 78 S M R CHOPPER 1017

Birthdate: 01/04/2011 Tattoo: 1017 Bull 43165133 - Horned  
 GH Neon 17N GH Difference Britisher 45L  
**TCC Orange County Chopper 70ET** GH Sir Simba Lass 107K  
 LCC Two Timin 438 ET Remitall Online 122L  
 RST ROF Reba 28H  
 CJH Harland 408 HH Advance 9005J  
**C Miss Harland 8026** CHJ L1 Dominette 0064  
 C Miss Hidalgo 6106 C Hidalgo ET  
 C 1029 Ms Gold 3111

BW	CED	BEPD	WW	YW	MILK
98	1.2	3.1	58	100	20
SC	MARB	REA	\$BMI	\$CEZ	\$CHB
1.2	.21	.57	23	17	31

A powerful growth bull out of Chopper. Chopper is a full brother to Nitro, and his calves are every bit as good as Nitro's. This bull is in the top 1% of the breed for WW and 2% for YW. Top 5% BMI, 2% CHB.



UPS TCC Nitro 1 ET - Sire of lots 9, 15, 16, 17, 79, 81, 82, 83

# 79 S M R NITRO 1067

Birthdate: 01/24/2011 Tattoo: 1067 Bull 43165136 - Horned  
 GH Neon 17N GH Difference Britisher 45L  
**UPS TCC Nitro 1ET** GH Sir Simba Lass 107K  
 LCC Two Timin 438 ET Remitall Online 122L  
 RST ROF Reba 28H  
 H5 500 Advance 897 CL 1 Domino 500E  
**/S Lady Advance 7124T** H5 Ms 9012 Advan 472  
 /S Lady Curve Bender 4017P /S Moms Curve Bender 0838  
 /S Lady Hilite 753G

BW	CED	BEPD	WW	YW	MILK
88	0.3	4.2	52	89	21
SC	MARB	REA	\$BMI	\$CEZ	\$CHB
0.8	-.06	.65	17	15	23

This dark red bull is stout built with a lot of bone and red meat. He is a full brother to lot 9. He ranks in the top 10% WW, 10% YW, 2% REA.



S M R Ribeye 1068 - Lot 80 - on feed at Simplot

# 80 S M R RIBEYE 1068

Birthdate: 01/23/2011 Tattoo: 1068 Bull 43165146 - Horned  
 KCF Bennett 3008 M 326 RRR Mr Felt 3008  
**S H F Rib Eye M326 R117** KCF Miss 459 F284  
 HVH Miss Hudson 83K 8M MSU MF Hudson 19H  
 Sun Vindy Miss 83K  
 HH Advance 373C CL 1 Domino 185  
**/S Lady Domino 408P** HH Miss Advance 160A  
 /S Lady Domino 244M CL 1 Domino 166  
 /S Lady Performer 820H

BW	CED	BEPD	WW	YW	MILK
78	4.7	0.4	40	56	25
SC	MARB	REA	\$BMI	\$CEZ	\$CHB
1.5	.18	.14	28	23	22

This is an outstanding individual. He ranks in the top 3% for CED, 5% BW, 1% SC, 1% BMI, 1% CEZ. He had an individual WR of 107. This bull will add a lot of value to a set of calves. Maternal brother to lot 11.

# 81 S M R Nitro 1086 ET

Birthdate: 02/06/2011 Tattoo: 1086 Bull 43176462 - Horned  
 GH Neon 17N GH Difference Britisher 45L  
**UPS TCC Nitro 1ET** GH Sir Simba Lass 107K  
 LCC Two Timin 438 ET Remittal Online 122L  
 CJH Cowboy 512 RST ROF Reba 28H  
**C Cowgirl 7056 ET** CJH Mister Mom 350  
 C Notice Me ET CJH L1 Dominette 717  
 C-S Pure Gold 98170  
 HH Miss Advance 104A

BW	CED	BEPD	WW	YW	MILK
ET	-2.0	5.4	58	96	19
SC	MARB	REA	\$BMI	\$CEZ	\$CHB
0.8	-.03	.66	16	12	26

Flush mate to lots 82 and 83. The dam of this bull is a flush mate to the Colyer donor cow C Cowgirl 7030 ET. Colyer's sold two Nitro x 7030 sons in their sale last spring for \$15,000 and \$25,000. 7030 daughters have also been very popular in Colyer's internet sale with her first selling for 34,000 for a 1/2 interest.

# 82 S M R Nitro 1087 ET

Birthdate: 02/07/2011 Tattoo: 1086 Bull 43176463 - Polled  
 GH Neon 17N GH Difference Britisher 45L  
**UPS TCC Nitro 1ET** GH Sir Simba Lass 107K  
 LCC Two Timin 438 ET Remittal Online 122L  
 CJH Cowboy 512 RST ROF Reba 28H  
**C Cowgirl 7056 ET** CJH Mister Mom 350  
 C Notice Me ET CJH L1 Dominette 717  
 C-S Pure Gold 98170  
 HH Miss Advance 104A

BW	CED	BEPD	WW	YW	MILK
ET	-2.0	5.4	58	96	19
SC	MARB	REA	\$BMI	\$CEZ	\$CHB
0.8	-.03	.66	16	12	26

A definite herd bull prospect. This bull represents a significant value opportunity when you consider the mating, and the price similar matings are bringing. This calf is moderate framed, with a lot of volume. He is polled and fully pigmented. Top 5% WW, 4% YW, 2% REA, 15% CHB.

# 83 S M R Nitro 1089 ET

Birthdate: 02/09/2011 Tattoo: 1089 Bull 43176464 - Polled  
 GH Neon 17N GH Difference Britisher 45L  
**UPS TCC Nitro 1ET** GH Sir Simba Lass 107K  
 LCC Two Timin 438 ET Remittal Online 122L  
 CJH Cowboy 512 RST ROF Reba 28H  
**C Cowgirl 7056 ET** CJH Mister Mom 350  
 C Notice Me ET CJH L1 Dominette 717  
 C-S Pure Gold 98170  
 HH Miss Advance 104A

BW	CED	BEPD	WW	YW	MILK
ET	-2.0	5.4	58	96	19
SC	MARB	REA	\$BMI	\$CEZ	\$CHB
0.8	-.03	.66	16	12	26

This bull is also polled and fully pigmented. He is also a definite herd bull candidate. This calf has a lot of bone and muscle mass. The dam of these bulls is a deep, powerful cow. Her natural calf this year (by Chopper) is pictured in this catalog below lot 10.



S M R Nitro 1087 ET - lot 82 - on summer range prior to weaning

# 84 S M R Moler 1094

Birthdate: 02/27/2011 Tattoo: 1094 Bull 43165137 - Horned  
 BR Moler ET Remittal Online 122L  
**C Moler 6225 ET** DM L1 Dominette 820  
 C Notice Me Now ET C-S Pure Gold 98170  
 C 212 Domino 4011 ET HH Miss Advance 104A  
**C 4011 Ms Dom 6123** CL 1 Domino 212M  
 C Ms 681 Advance 1232 C Ms Pure Gold 2003  
 EE 9012 L1 681 1ET  
 C 8403 Ms Ach 95082

BW	CED	BEPD	WW	YW	MILK
79	3.4	1.9	37	57	25
SC	MARB	REA	\$BMI	\$CEZ	\$CHB
0.6	.11	.29	17	18	20

A calving ease bull out of a nice cow we bought from Colyers. She has a BR Avg. of 96 and a WR Avg. of 106 on three calves. She consistently has smaller calves that grow. This bull is top 10% CED, 15% BW, 10% CEZ.

# 85 S M R Moler 1095

Birthdate: 02/26/2011 Tattoo: 1095 Bull 43165139 - Polled  
 BR Moler ET Remittal Online 122L  
**C Moler 6225 ET** DM L1 Dominette 820  
 C Notice Me Now ET C-S Pure Gold 98170  
 HH Miss Advance 104A  
 /S Mister Mom 7745 Mister Mom 221  
**/S Lady Curvebender 5038R** /S Ms Peer Plan 526E  
 TS Lady Peerless 0403 TS Peerless Mark 6648  
 TS Miss Mark 2463

BW	CED	BEPD	WW	YW	MILK
88	1.0	3.3	39	62	25
SC	MARB	REA	\$BMI	\$CEZ	\$CHB
0.4	.03	.25	13	15	18

A maternal brother to lot 14. This bull has an individual WR of 111. His dam is exceptional. A really nice polled bull.

# 86 S M R Moler 1115

Birthdate: 03/18/2011 Tattoo: 1115 Bull 431698004 - Horned  
 BR Moler ET Remittal Online 122L  
**C Moler 6225 ET** DM L1 Dominette 820  
 C Notice Me Now ET C-S Pure Gold 98170  
 HH Miss Advance 104A  
 HH Advance 4191P CL 1 Domino 986J  
**C 4191 Ms Adv 6138** HH Miss Advance 920J  
 C Ms Pure Gold 3222 C-S Pure Gold 98170  
 C 9012Y Miss Adv 98230

BW	CED	BEPD	WW	YW	MILK
98	-1.1	5.7	49	79	25
SC	MARB	REA	\$BMI	\$CEZ	\$CHB
0.7	0.0	.29	14	13	22

Out of a really good 4191 daughter that has a WR Avg. of 103 on 4 calves, with a daughter in the herd and a son to Jaca Livestock. A lot of growth potential with this bull.



C Cowgirl 7056 ET - Donor dam of lots 81, 82, 83

# BULLS ON TEST AT THE WASHINGTON CATTLEMEN'S BULL TEST SELL ON MARCH 28, 2012 IN ELTOPIA WASHINGTON

## S M R FINAL ANSWER 1036

Birthdate: 01/10/2011 Tattoo: 1036 Bull 16867392  
 Sitz Traveler 8180 G D A R Traveler 71  
**S A V Final Answer 0035** Sitz Everelda Entense 1137  
 S A V Emulous 8145 Bon View Bando 598  
 Twin Valley Precision E161 S A V Sky Emulous 2124  
**Thomas Lucy 31105** G A R Precision 1680  
 Thomas Lucy 0698 W C C Blackcap  
 V D A R Lucys Boy  
 Thomas Lucy 1041

BW	CED	BEPD	WW	YW	MILK
81	10	0.4	51	94	21
SC	MARB	REA	\$EN	\$W	\$B
.70	.42	.36	-0.58	32.52	51.70

A powerful individual with very balanced EPDs out of the great Final Answer bull. This calf has a lot of eye appeal. He is long, deep, wide, and travels very well. A maternal brother to lot 3. His dam is one of our best cows from the Thomas Angus Ranch. He had an actual wean weight of 800 pounds.



S M R Final Answer 1036 – photo taken at weaning time

## S M R RIBEYE 1066

Birthdate: 01/22/2011 Tattoo: 1066 Bull 43165134 - Polled  
 KCF Bennett 3008 M 326 RRR Mr Felt 3008  
**S H F Rib Eye M326 R117** KCF Miss 459 F284  
 HVH Miss Hudson 83K 8M MSU MF Hudson 19H  
 Sun Vindy Miss 83K  
 CJH Harland 408 HH Advance 9005J  
**S M R Miss Harlie 813** CJH L1 Dominette 0064  
 /S Lady Domino 408P HH Advance 373  
 /S Lady Domino 244M

BW	CED	BEPD	WW	YW	MILK
83	4.1	1.5	48	74	28
SC	MARB	REA	\$BMI	\$CEZ	\$CHB
1.6	.33	.19	28	21	28

This bull's sire and maternal grand sire had more calves registered in 2011 than any other sires. He is bred for calving ease, growth, maternal, and carcass all through his pedigree. He is polled and fully pigmented. He had an individual WR of 115, and his dam has a WR Avg. of 106 on two calves. He is in the top 5% CED, 10% BW, 1% BMI, 1% CEZ, 10% CHB.



S H F Rib Eye M326 R117 – Sire of S M R Ribeye 1066 and lots 77, 80.

## Definitions for EPD Abbreviations

### Angus

CED – Calving Ease Direct EPD  
BW – Birth Weight EPD  
YW – Yearling Weight EPD  
Milk – Milk EPD  
SC – Scrotal Circumference  
MARB – Marbling EPD  
RE – Rib Eye area EPD  
\$EN – Cow Energy Value  
\$W – Weaned Calf Value  
\$B – Beef Value

### Hereford

CED – Calving Ease Direct EPD  
BW – Birth Weight EPD  
YW – Yearling Weight EPD  
Milk – Milk EPD  
SC – Scrotal Circumference  
MARB – Marbling EPD  
RE – Rib Eye area EPD  
\$BMI – Baldy Maternal Index  
\$CEZ – Calving Ease Index  
\$CHB – Certified Hereford Beef Index

## EPD Definitions

### Angus

**\$EN – Cow Energy Value** – Assesses differences in cow energy requirements as an expected dollar savings difference in daughters of sires. A larger value is more favorable when comparing two animals. \$EN savings include lactation energy requirements and energy costs associated with differences in mature cow size. Think of this as miles per gallon, or efficiency.

**\$W – Weaned Calf Value** – The expected average difference in future progeny performance for pre-weaning merit, expressed in \$/head. \$W includes both revenue and cost adjustments associated with differences in birth weight, weaning direct growth, maternal milk, and mature cow size. **This is a very important EPD for cattlemen who sell their calves at weaning.**

**\$B – Beef Value** – The expected average dollar per head difference in progeny post weaning, performance, and carcass value. Includes feedlot gain value, feed consumption, quality grade, and yield grade attributes. This EPD is important for cattlemen who will retain ownership through feeding and slaughter, or want premiums from feeders.

### Hereford

**\$BMI – Baldy Maternal Index** – An index to maximize profit for commercial cow-calf producers who use Hereford bulls in rotational crossbreeding programs on Angus based cows and heifers. Retained ownership of calves is assumed, with fed cattle marketed on a CHB pricing grid.

**\$CEZ – Calving EZ Index** – This index is similar to BMI\$ except Hereford bulls are mated only to yearling heifers. Increased emphasis on calving ease compared to other indexes.

**\$CHB – Certified Hereford Beef Index** – A terminal sire index, where Hereford bulls are mated to British-cross cows and all offspring are sold as fed cattle on a CHB pricing grid.

# Reference Sire Summary

## Angus Sires

<u>Sire Name</u>	<u>CED</u>	<u>BW</u>	<u>WW</u>	<u>YW</u>	<u>MILK</u>	<u>MARB</u>	<u>RE</u>	<u>SC</u>	<u>\$EN</u>	<u>\$W</u>	<u>\$B</u>
21AR Roundup	8	1.5	63	101	13	0.31	0.76	0.20	5.89	36.35	67.06
BC Matrix	8	1.7	60	105	17	0.05	0.43	0.61	8.37	41.70	38.97
CCC Foresight 7013	10	-0.4	45	81	25	0.39	0.61	1.05	-2.75	31.55	78.54
Connealy Thunder	7	-0.5	44	91	29	0.25	.60	0.28	-9.35	29.56	48.76
G A R Predestined	4	4.0	52	97	29	1.24	0.65	0.35	5.62	43.2	84.04
G A R Retail Product	4	2.4	46	91	25	0.48	0.62	0.91	7.68	38.64	63.55
K C F Bennett Total	9	-0.2	45	82	20	0.28	0.07	0.66	9.15	36.33	40.57
Mytty In Focus	13	-1.4	54	99	25	0.39	-0.06	1.79	2.19	45.21	60.49
Riverbend Rito	4	2.1	32	62	16	0.48	0.30	0.0	14.93	21.68	48.35
S A V Bismarck	13	0.2	58	99	27	0.16	0.67	0.95	-7.33	40.14	50.44
S A V Final Answer	12	-1.0	62	105	24	0.44	0.36	1.12	10.01	57.98	55.02
S A V Iron Mountain	8	3.0	63	111	19	0.47	0.22	0.69	-5.59	30.12	54.92
S A V Pioneer	5	1.8	61	113	29	0.37	0.71	1.07	-14.22	36.27	63.40
Sitz Dash	11	-0.6	50	91	30	0.38	0.66	0.8	-10.66	34.83	61.26
Sitz Upward	6	2.4	72	137	43	0.39	0.66	1.39	-35.25	40.49	79.33
S M R Direction 9106	12	-0.7	42	75	28	0.54	0.68	0.41	-4.71	31.33	69.34
Woodhill Foresight	-1	3.8	60	106	26	0.54	0.64	1.72	3.74	44.56	79.25
<b>South Mountain - Sires</b>	<b>8</b>	<b>1.1</b>	<b>53</b>	<b>97</b>	<b>25</b>	<b>0.42</b>	<b>0.51</b>	<b>0.92</b>	<b>-1.31</b>	<b>37.39</b>	<b>61.24</b>
<b>Breed Average - Sires</b>	<b>5</b>	<b>1.8</b>	<b>46</b>	<b>83</b>	<b>22</b>	<b>0.39</b>	<b>0.25</b>	<b>0.49</b>	<b>0.12</b>	<b>26.24</b>	<b>52.56</b>

## Hereford Sires

<u>Sire Name</u>	<u>CED</u>	<u>BW</u>	<u>WW</u>	<u>YW</u>	<u>MILK</u>	<u>MARB</u>	<u>RE</u>	<u>SC</u>	<u>\$BMI</u>	<u>\$CEZ</u>	<u>\$CHB</u>
C Moler 6225	0.9	4.1	43	66	22	0.04	0.33	0.4	15	15	22
Churchill Rancher 592R	-0.4	4.6	61	100	21	0.44	0.27	1.4	25	14	33
H Easy Deal 609 ET	1.1	2.2	39	79	23	0.07	0.64	0.4	13	15	21
HH Advance 5212R	0.9	3.2	55	85	36	0.09	0.29	1.3	20	16	27
SHF Ribeye M326 R117	3.8	1.7	55	81	25	0.27	0.32	1.7	31	22	33
TCC Orange County Chopper	-1.2	4.8	67	113	12	0.06	0.85	0.8	20	14	33
UPS TCC Nitro 1ET	-1.6	5.7	65	108	13	-0.03	0.76	0.7	18	13	29
<b>South Mountain - Sires</b>	<b>0.4</b>	<b>3.8</b>	<b>55</b>	<b>90</b>	<b>22</b>	<b>0.13</b>	<b>0.49</b>	<b>1.2</b>	<b>20</b>	<b>16</b>	<b>28</b>
<b>Breed Average - Sires</b>	<b>0.4</b>	<b>3.6</b>	<b>46</b>	<b>76</b>	<b>18</b>	<b>0.05</b>	<b>0.28</b>	<b>0.8</b>	<b>17</b>	<b>15</b>	<b>21</b>
<b>Hereford Adjust from Angus</b>		<b>2.8</b>	<b>-1.5</b>	<b>-17.1</b>		<b>-0.32</b>	<b>-0.07</b>				

# Notes

# Sale Terms & Conditions

## Terms of Sale

- Terms of the sale are cash or bankable check at the time of sale, unless prior arrangements have been made.
- Each animal sold becomes the property of the buyer as soon as it is sold. We will not be responsible for any injury or loss after animals are sold.
- For customers needing a feeding option, South Mountain will feed the bulls until April 1, 2012 for \$3 per day.

## Delivery

- Free delivery within 250 miles on purchases in excess of \$2,500. Free delivery within 500 miles on purchases in excess of \$5,000. Additional delivery needs will be provided at cost.
- A \$50 discount for any animal picked up within 2 days of sale.
- We will deliver the bulls as soon as possible after the sale.

## Risk

All persons who attend the sale do so at their own risk. Neither the owners, or their employees assume any liability, legal or otherwise, for any accidents which may occur.

## Guarantee

- All bulls have passed a semen test and are guaranteed breeders.
- You will have 90 days to test the bull, from the date of delivery. If you suspect the bull to be a non-breeder, you will need to have the bull inspected by a veterinarian.
- Buyer is required to return the bull to us in good condition, at his expense, for a credit or a replacement animal of equal value.

## Supplemental Information

Sale day weights, scrotal measurements, semen test results, and ultrasound data will be available at the sale.

## Map

